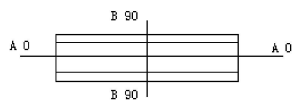
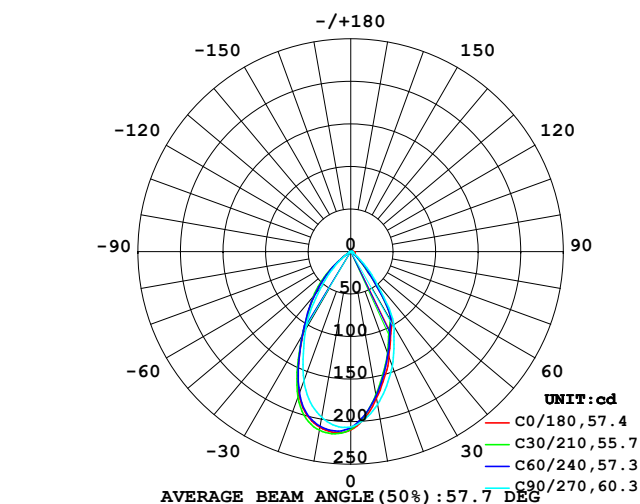


LUMINAIRE PHOTOMETRIC TEST REPORT

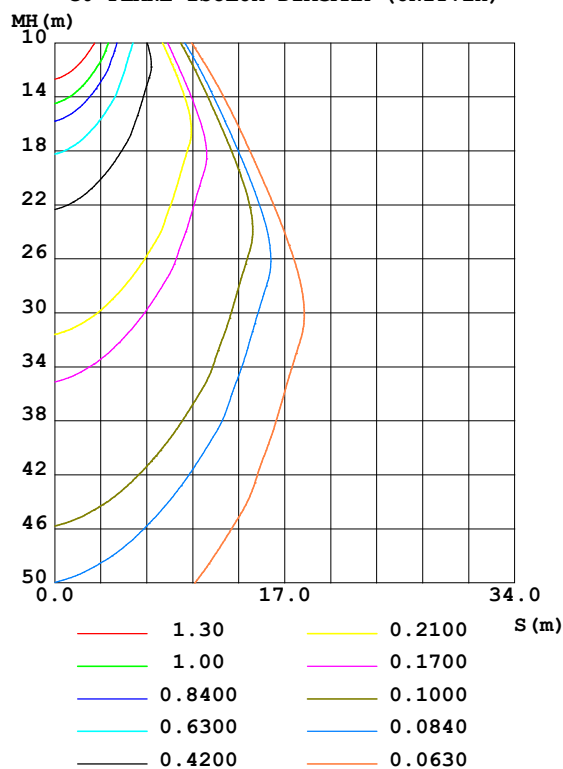
Test:U:24.00V I:0.099A P:2.38W PF:1.000 Freq:0Hz Lamp Flux:211.809x1 lm		
NAME: 62411-6500K	TYPE:	WEIGHT:
SPEC.:	DIM.:	SERIAL No.: 2025062304
MFR.:	SUR.:	Shielding Angle:

DATA OF LAMP		PHOTOMETRIC DATA Eff: 89.15 lm/W			
MODEL		I _{max} (cd)	215.1	S/MH (C0/180)	0.95
NOMINAL POWER (W)		LOR (%)	100.0	S/MH (C90/270)	0.91
RATED VOLTAGE (V)	24	TOTAL FLUX (lm)	211.81	η UP,DN (C0-180)	0.1,48.8
NOMINAL FLUX (lm)	211.809	CIE CLASS	DIRECT	η UP,DN (C180-360)	0.1,51.0
LAMPS INSIDE	1	η up (%)	0.2	CIBSE SHR NOM	0.75
TEST VOLTAGE (V)	24	η down (%)	99.8	CIBSE SHR MAX	0.95

LUMINOUS INTENSITY DISTRIBUTION DIAGRAM



C0 PLANE ISOLUX DIAGRAM (UNIT:lx)



C Range: 0 - 360DEG
C Interval: 15.0DEG
Test Speed: HIGH
Temperature:25DEG
Operators:SENPU
Test Date:2025-06-21

γ Range: 0 - 100DEG
γ Interval: 1.0DEG
Test System:EVERFINE GO-2000B_V1 SYSTEM V2.00.444
Humidity:61%
Test Distance:8.000m [K=1.0000]
Remarks:

ZONAL FLUX DIAGRAM

ZONAL FLUX DIAGRAM:

γ	C0	C45	C90	C135	C180	C225	C270	C315	γ	Φ zone	Φ total	%lum,lamp
10	175.2	171.6	182.4	200.0	209.7	211.5	197.6	178.7	0- 10	18.92	18.92	8.93,8.93
20	131.1	127.2	143.0	170.6	178.1	180.1	161.5	137.9	10- 20	48.72	67.64	31.9,31.9
30	97.10	93.87	102.3	118.5	112.9	114.4	106.4	92.77	20- 30	58.88	126.5	59.7,59.7
40	36.70	33.27	45.04	64.39	65.63	67.62	53.51	38.18	30- 40	47.92	174.4	82.4,82.4
50	9.385	8.523	13.47	26.44	24.87	24.11	18.76	9.608	40- 50	24.63	199.1	94,94
60	4.701	2.578	2.810	4.341	3.006	2.470	2.065	2.049	50- 60	7.375	206.4	97.5,97.5
70	3.363	1.324	1.535	1.777	2.091	1.726	1.394	1.264	60- 70	2.208	208.6	98.5,98.5
80	3.532	0.7664	0.9069	1.028	1.630	1.316	1.116	0.8631	70- 80	1.647	210.3	99.3,99.3
90	2.258	0.2093	0.4294	0.6764	0.7583	0.0611	0.0087	0.0610	80- 90	1.086	211.4	99.8,99.8
100	2.197	0.2266	0.1046	0.1133	0.5840	0.0436	0.0087	0.0436	90-100	0.4084	211.8	100,100
110	0	0	0	0	0	0	0	0	100-110	0.0209	211.8	100,100
120	0	0	0	0	0	0	0	0	110-120	0	211.8	100,100
130	0	0	0	0	0	0	0	0	120-130	0	211.8	100,100
140	0	0	0	0	0	0	0	0	130-140	0	211.8	100,100
150	0	0	0	0	0	0	0	0	140-150	0	211.8	100,100
160	0	0	0	0	0	0	0	0	150-160	0	211.8	100,100
170	0	0	0	0	0	0	0	0	160-170	0	211.8	100,100
180	0	0	0	0	0	0	0	0	170-180	0	211.8	100,100
DEG	LUMINOUS INTENSITY:cd									UNIT:lm		

Conical surface Flux(90deg): 189.41 lm

%lum = 89.4%

%lamp = 89.4%

Conical surface Flux(120deg): 206.44 lm

%lum = 97.5%

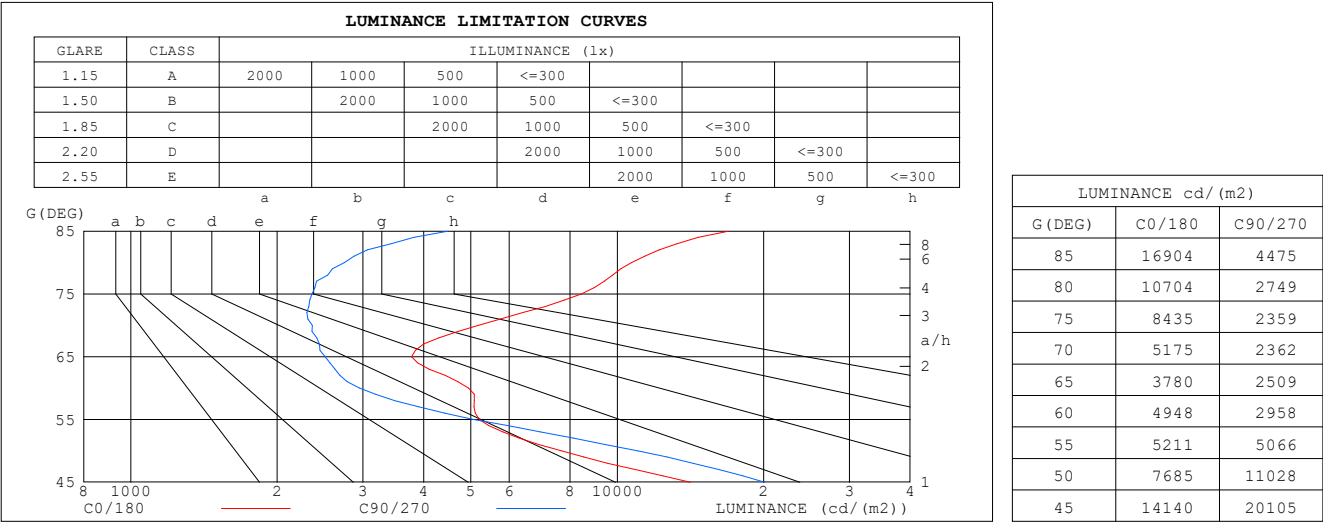
%lamp = 97.5%

C Range: 0 - 360DEG
 C Interval: 15.0DEG
 Test Speed: HIGH
 Temperature:25DEG
 Operators:SENPU
 Test Date:2025-06-21

γ Range: 0 - 100DEG
 γ Interval: 1.0DEG
 Test System:EVERFINE GO-2000B_V1 SYSTEM V2.00.444
 Humidity:61%
 Test Distance:8.000m [K=1.0000]
 Remarks:

LUMINANCE LIMITATION CURVES

Test:U:24.00V I:0.099A P:2.38W PF:1.000 Freq:0Hz Lamp Flux:211.809x1 lm		
NAME: 62411-6500K	TYPE:	WEIGHT:
SPEC.:	DIM.:	SERIAL No.: 2025062304
MFR.:	SUR.:	Shielding Angle:



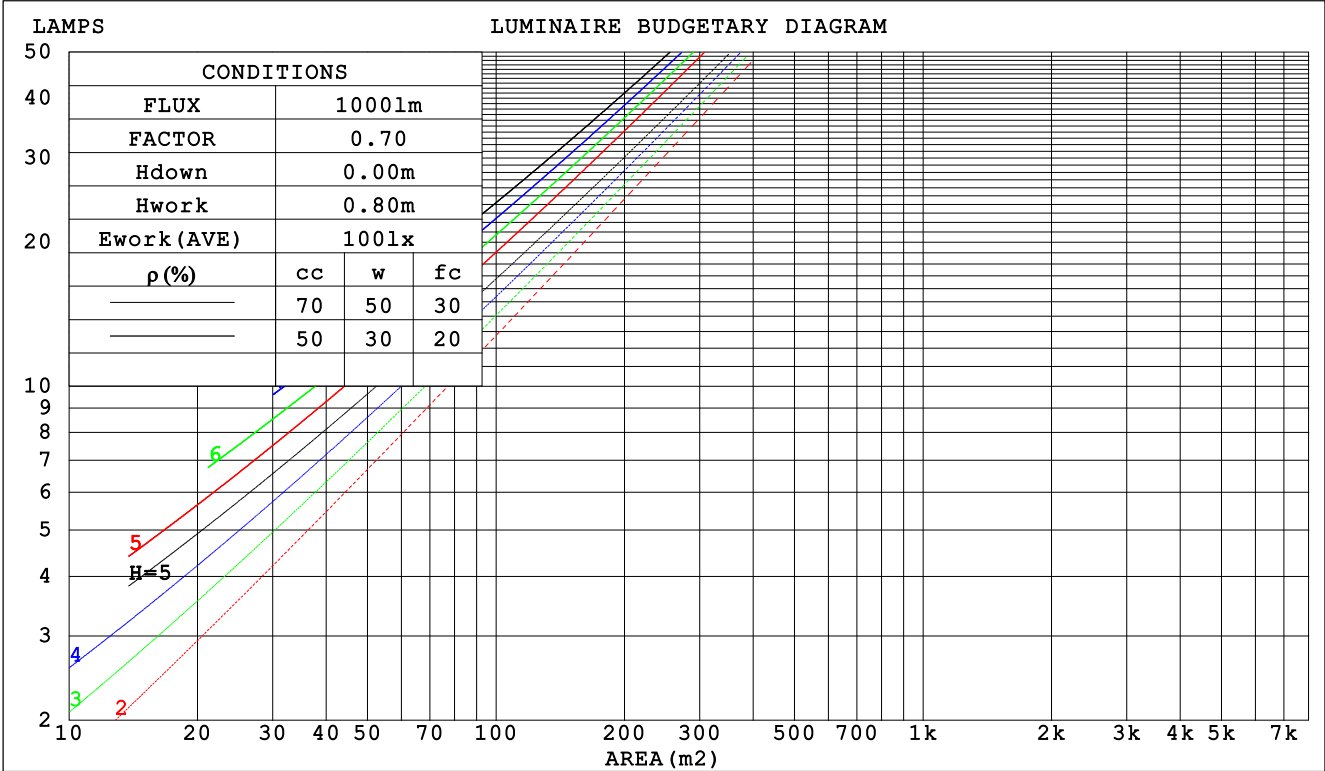
C Range: 0 - 360DEG
C Interval: 15.0DEG
Test Speed: HIGH
Temperature:25DEG
Operators:SENPU
Test Date:2025-06-21

γ Range: 0 - 100DEG
γ Interval: 1.0DEG
Test System:EVERFINE GO-2000B_V1 SYSTEM V2.00.444
Humidity:61%
Test Distance:8.000m [K=1.0000]
Remarks:

CU AND LUMINAIRE BUDGETARY ESTIMATE DIAGRAM

Test:U:24.00V I:0.099A P:2.38W PF:1.000 Freq:0Hz		
Lamp Flux:211.809x1 lm		
NAME: 62411-6500K	TYPE:	WEIGHT:
SPEC.:	DIM.:	SERIAL No.: 2025062304
MFR.:	SUR.:	Shielding Angle:

pcc	80%			70%			50%			30%			10%			0
pw	50%	30%	10%	50%	30%	10%	50%	30%	10%	50%	30%	10%	50%	30%	10%	0
pfc	20%			20%			20%			20%			20%			0
RCR	RCR:Room Cavity Ratio						Coefficients of Utilization(CU)									
0.0	1.19	1.19	1.19	1.16	1.16	1.16	1.11	1.11	1.11	1.06	1.06	1.06	1.02	1.02	1.02	.00
1.0	1.10	1.07	1.04	1.07	1.05	1.03	1.03	1.01	.99	.99	.98	.96	.96	.95	.94	.92
2.0	1.01	.96	.93	.99	.95	.92	.96	.92	.89	.93	.90	.87	.90	.88	.86	.84
3.0	.93	.88	.83	.92	.87	.82	.89	.85	.81	.86	.83	.80	.84	.81	.79	.77
4.0	.86	.80	.75	.85	.79	.75	.83	.78	.74	.81	.76	.73	.79	.75	.72	.71
5.0	.80	.74	.69	.79	.73	.68	.77	.72	.68	.75	.71	.67	.74	.70	.67	.65
6.0	.74	.68	.63	.74	.67	.63	.72	.67	.62	.70	.66	.62	.69	.65	.62	.60
7.0	.69	.63	.58	.69	.62	.58	.67	.62	.58	.66	.61	.57	.65	.60	.57	.56
8.0	.65	.58	.54	.64	.58	.54	.63	.58	.54	.62	.57	.53	.61	.56	.53	.52
9.0	.61	.55	.50	.60	.54	.50	.59	.54	.50	.58	.53	.50	.58	.53	.50	.48
10.0	.57	.51	.47	.57	.51	.47	.56	.50	.47	.55	.50	.47	.54	.50	.46	.45



C Range: 0 - 360DEG
C Interval: 15.0DEG
Test Speed: HIGH
Temperature:25DEG
Operators:SENPU
Test Date:2025-06-21

γ Range: 0 - 100DEG
γ Interval: 1.0DEG
Test System:EVERFINE GO-2000B_V1 SYSTEM V2.00.444
Humidity:61%
Test Distance:8.000m [K=1.0000]
Remarks:

WEC AND CCEC

Test:U:24.00V I:0.099A P:2.38W PF:1.000 Freq:0Hz Lamp Flux:211.809x1 lm		
NAME: 62411-6500K	TYPE:	WEIGHT:
SPEC.:	DIM.:	SERIAL No.: 2025062304
MFR.:	SUR.:	Shielding Angle:

pcc	80%			70%			50%			30%			10%			0	
pw	50%	30%	10%	50%	30%	10%	50%	30%	10%	50%	30%	10%	50%	30%	10%	0	
pfc	20%			20%			20%			20%			20%			0	
RCR	RCR:Room Cavity Ratio						Wall Exitance Coefficients (WEC)										
0.0																	
1.0	.200	.114	.036	.193	.110	.035	.181	.104	.033	.169	.097	.031	.158	.092	.030		
2.0	.191	.105	.032	.185	.102	.031	.175	.097	.030	.164	.092	.029	.155	.088	.028		
3.0	.182	.097	.029	.177	.095	.028	.167	.091	.028	.159	.087	.027	.151	.083	.026		
4.0	.172	.090	.026	.168	.088	.026	.160	.085	.025	.152	.082	.025	.145	.079	.024		
5.0	.164	.083	.024	.160	.082	.024	.153	.080	.023	.146	.077	.023	.140	.075	.022		
6.0	.156	.078	.022	.152	.077	.022	.146	.075	.022	.140	.073	.021	.135	.071	.021		
7.0	.148	.073	.021	.145	.072	.021	.140	.071	.020	.134	.069	.020	.129	.067	.020		
8.0	.141	.069	.019	.139	.068	.019	.134	.067	.019	.129	.065	.019	.124	.064	.019		
9.0	.135	.065	.018	.133	.065	.018	.128	.063	.018	.124	.062	.018	.120	.061	.018		
10.0	.129	.062	.017	.127	.061	.017	.123	.060	.017	.119	.059	.017	.115	.058	.017		

pcc	80%			70%			50%			30%			10%			0
pw	50%	30%	10%	50%	30%	10%	50%	30%	10%	50%	30%	10%	50%	30%	10%	0
pfc	20%			20%			20%			20%			20%			0
RCR	RCR:Room Cavity Ratio						Ceiling Cavity Exitance Coefficients (CCEC)									
0.0	.192	.192	.192	.164	.164	.164	.112	.112	.112	.064	.064	.064	.021	.021	.021	
1.0	.174	.159	.145	.149	.136	.124	.102	.094	.086	.059	.054	.050	.019	.017	.016	
2.0	.160	.134	.112	.137	.115	.097	.094	.080	.067	.054	.046	.039	.017	.015	.013	
3.0	.149	.115	.088	.128	.099	.077	.088	.069	.054	.051	.040	.032	.016	.013	.010	
4.0	.140	.101	.071	.120	.087	.062	.082	.061	.044	.048	.036	.026	.015	.012	.008	
5.0	.131	.090	.059	.113	.077	.051	.078	.054	.036	.045	.032	.021	.015	.010	.007	
6.0	.124	.080	.049	.107	.070	.043	.074	.049	.030	.043	.029	.018	.014	.009	.006	
7.0	.118	.073	.042	.101	.063	.036	.070	.044	.026	.041	.026	.015	.013	.009	.005	
8.0	.112	.067	.036	.097	.058	.031	.067	.041	.022	.039	.024	.013	.013	.008	.004	
9.0	.107	.062	.031	.092	.054	.027	.064	.038	.019	.037	.022	.012	.012	.007	.004	
10.0	.102	.058	.028	.088	.050	.024	.061	.035	.017	.036	.021	.010	.012	.007	.003	

C Range: 0 - 360DEG
C Interval: 15.0DEG
Test Speed: HIGH
Temperature:25DEG
Operators:SENPU
Test Date:2025-06-21

γ Range: 0 - 100DEG
γ Interval: 1.0DEG
Test System:EVERFINE GO-2000B_V1 SYSTEM V2.00.444
Humidity:61%
Test Distance:8.000m [K=1.0000]
Remarks:

UGR(Unified Glare Rating) Table

Test:U:24.00V I:0.099A P:2.38W PF:1.000 Freq:0Hz Lamp Flux:211.809x1 lm										
NAME: 62411-6500K					TYPE:			WEIGHT:		
SPEC.:					DIM.:			SERIAL No.: 2025062304		
MFR.:					SUR.:			Shielding Angle:		
ceiling/cavity	0.7	0.7	0.5	0.5	0.3	0.7	0.7	0.5	0.5	0.3
walls	0.5	0.3	0.5	0.3	0.3	0.5	0.3	0.5	0.3	0.3
working plane	0.2	0.2	0.2	0.2	0.2	0.2	0.2	0.2	0.2	0.2
Room dimensions	Viewed crosswise					Viewed endwise				
x = 2H y = 2H	17.2	18.3	17.5	18.5	18.6	17.6	18.6	17.8	18.8	19.0
3H	17.4	18.4	17.7	18.6	18.8	17.5	18.5	17.8	18.7	18.9
4H	18.1	19.0	18.4	19.2	19.5	17.5	18.4	17.8	18.6	18.9
6H	18.8	19.7	19.1	19.9	20.2	17.5	18.3	17.8	18.6	18.8
8H	19.2	20.0	19.5	20.3	20.5	17.5	18.3	17.8	18.6	18.8
12H	19.6	20.4	20.0	20.7	21.0	17.5	18.3	17.8	18.6	18.9
4H 2H	17.0	17.9	17.3	18.2	18.4	17.4	18.3	17.7	18.5	18.7
3H	17.3	18.1	17.6	18.4	18.7	17.3	18.1	17.7	18.4	18.7
4H	18.1	18.9	18.5	19.2	19.5	17.3	18.0	17.7	18.4	18.7
6H	19.0	19.6	19.4	19.9	20.3	17.4	18.0	17.8	18.3	18.7
8H	19.4	20.0	19.8	20.3	20.7	17.4	18.0	17.8	18.4	18.7
12H	20.0	20.5	20.4	20.9	21.3	17.5	18.0	17.9	18.4	18.8
8H 4H	18.0	18.6	18.4	19.0	19.4	17.3	17.8	17.7	18.2	18.6
6H	18.9	19.4	19.3	19.8	20.2	17.3	17.8	17.8	18.2	18.6
8H	19.4	19.8	19.8	20.2	20.7	17.4	17.9	17.9	18.3	18.7
12H	20.1	20.4	20.5	20.9	21.4	17.6	18.0	18.1	18.4	18.9
12H 4H	18.0	18.5	18.4	18.9	19.3	17.2	17.8	17.6	18.1	18.5
6H	18.9	19.3	19.3	19.7	20.2	17.3	17.8	17.8	18.2	18.6
8H	19.4	19.7	19.8	20.2	20.6	17.4	17.8	17.9	18.3	18.7
Variations with the observer position at spacings(CIE Pub.117):										
S = 1.0H	+ 1.6 / - 1.5					+ 2.8 / - 4.4				
1.5H	+ 2.9 / - 1.4					+ 4.3 / - 4.6				
2.0H	+ 2.1 / - 0.8					+ 5.7 / - 3.1				

CIE Pub.117, 211.8 lm Total Lamp Luminous Flux Corrected ($8\log(F/F_0) = -5.4$)
Area: 0.0019 m²

C Range: 0 - 360DEG
C Interval: 15.0DEG
Test Speed: HIGH
Temperature:25DEG
Operators:SENPU
Test Date:2025-06-21

γ Range: 0 - 100DEG
 γ Interval: 1.0DEG
Test System:EVERFINE GO-2000B_V1 SYSTEM V2.00.444
Humidity:61%
Test Distance:8.000m [K=1.0000]
Remarks:

UTILIZATION FACTORS TABLE

Test:U:24.00V I:0.099A P:2.38W PF:1.000 Freq:0Hz Lamp Flux:211.809x1 lm		
NAME: 62411-6500K	TYPE:	WEIGHT:
SPEC.:	DIM.:	SERIAL No.: 2025062304
MFR.:	SUR.:	Shielding Angle:

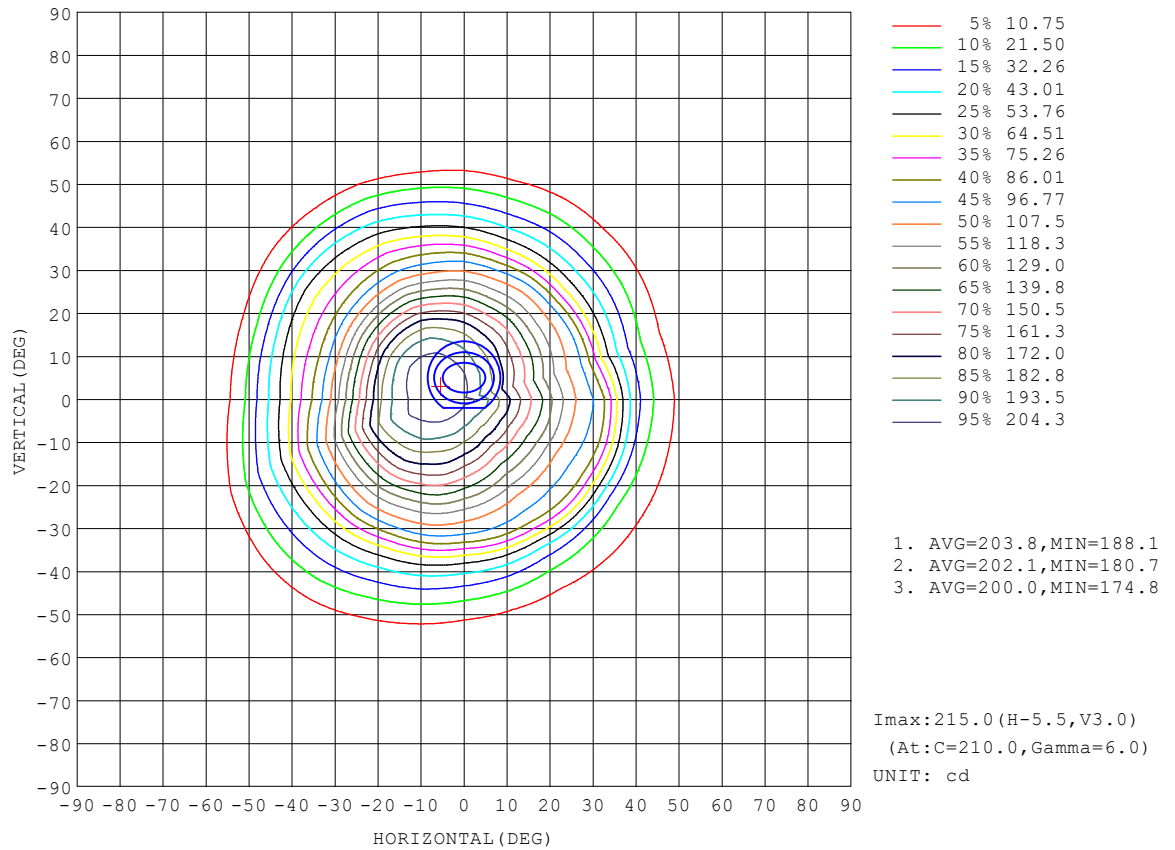
REFLECTANCE										
Ceiling	0.8	0.8	0.8	0.7	0.7	0.7	0.5	0.5	0.5	0
Walls	0.7	0.5	0.3	0.7	0.5	0.3	0.7	0.5	0.3	0
Working plane	0.2	0.2	0.2	0.2	0.2	0.2	0.2	0.2	0.2	0
ROOM INDEX	UTILIZATION FACTORS (PERCENT) $k(RI) \times RCR = 5$									
$k = 0.60$	80	73	68	80	73	68	79	72	68	64
0.80	89	82	77	88	81	77	87	81	77	72
1.00	95	88	84	94	87	83	92	88	83	78
1.25	99	93	89	98	93	89	96	91	88	83
1.50	103	97	93	101	96	92	99	95	91	86
2.00	106	101	97	105	100	97	102	98	95	90
2.50	108	104	100	106	102	99	103	100	97	91
3.00	110	106	103	108	105	102	105	102	99	93
4.00	112	109	106	110	107	105	106	104	102	95
5.00	114	111	109	111	109	107	107	105	104	96
ROOM INDEX	UF (total)									Direct
According to DIN EN 13032-2 2004			Suspended					SHRNOM = 1.25		

C Range: 0 - 360DEG
 C Interval: 15.0DEG
 Test Speed: HIGH
 Temperature: 25DEG
 Operators: SENPU
 Test Date: 2025-06-21

γ Range: 0 - 100DEG
 γ Interval: 1.0DEG
 Test System: EVERFINE GO-2000B_V1 SYSTEM V2.00.444
 Humidity: 61%
 Test Distance: 8.000m [K=1.0000]
 Remarks:

ISOCANDELA DIAGRAM

Test:U:24.00V I:0.099A P:2.38W PF:1.000 Freq:0Hz Lamp Flux:211.809x1 lm		
NAME: 62411-6500K	TYPE:	WEIGHT:
SPEC.:	DIM.:	SERIAL No.: 2025062304
MFR.:	SUR.:	Shielding Angle:

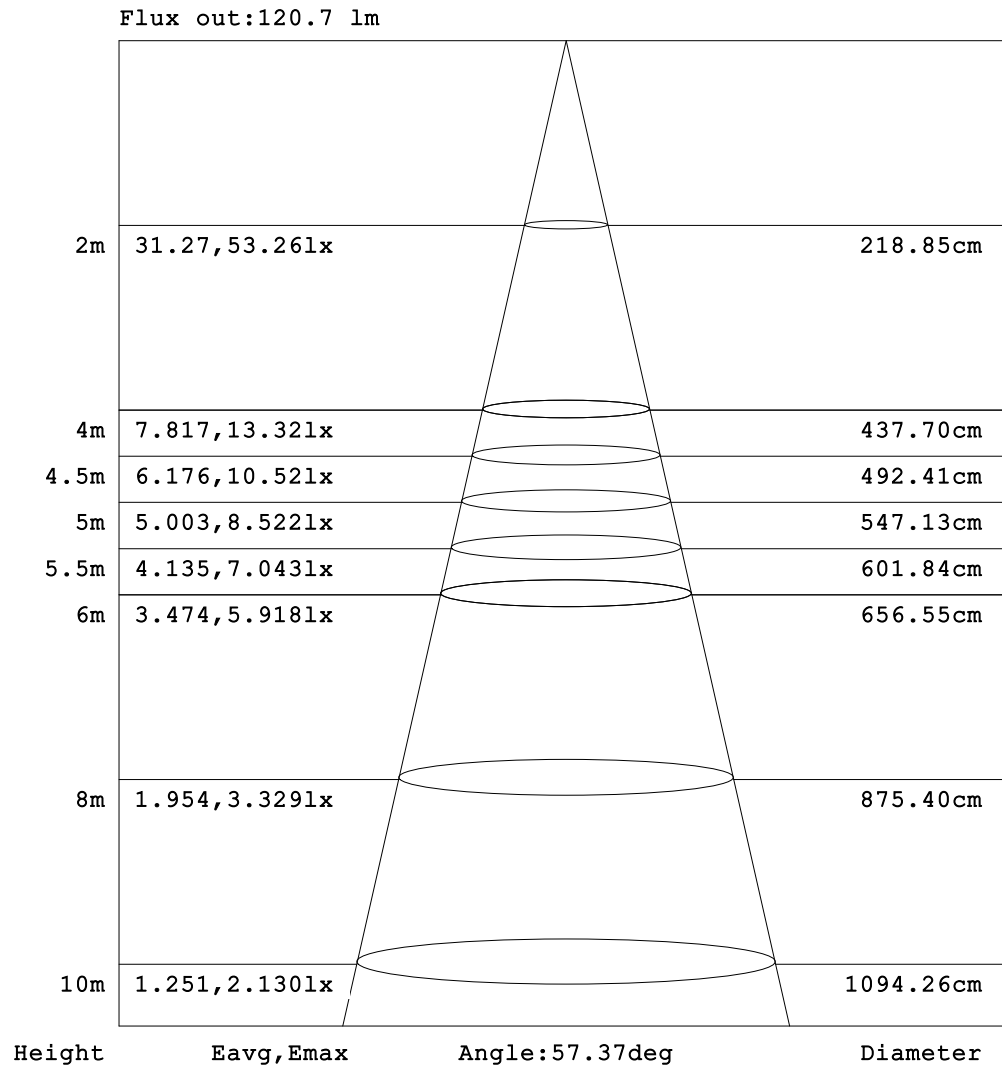


C Range: 0 - 360DEG
C Interval: 15.0DEG
Test Speed: HIGH
Temperature:25DEG
Operators:SENPU
Test Date:2025-06-21

γ Range: 0 - 100DEG
 γ Interval: 1.0DEG
Test System:EVERFINE GO-2000B_V1 SYSTEM V2.00.444
Humidity:61%
Test Distance:8.000m [K=1.0000]
Remarks:

AAI Figure

Test:U:24.00V I:0.099A P:2.38W PF:1.000 Freq:0Hz Lamp Flux:211.809x1 lm		
NAME: 62411-6500K	TYPE:	WEIGHT:
SPEC.:	DIM.:	SERIAL No.: 2025062304
MFR.:	SUR.:	Shielding Angle:



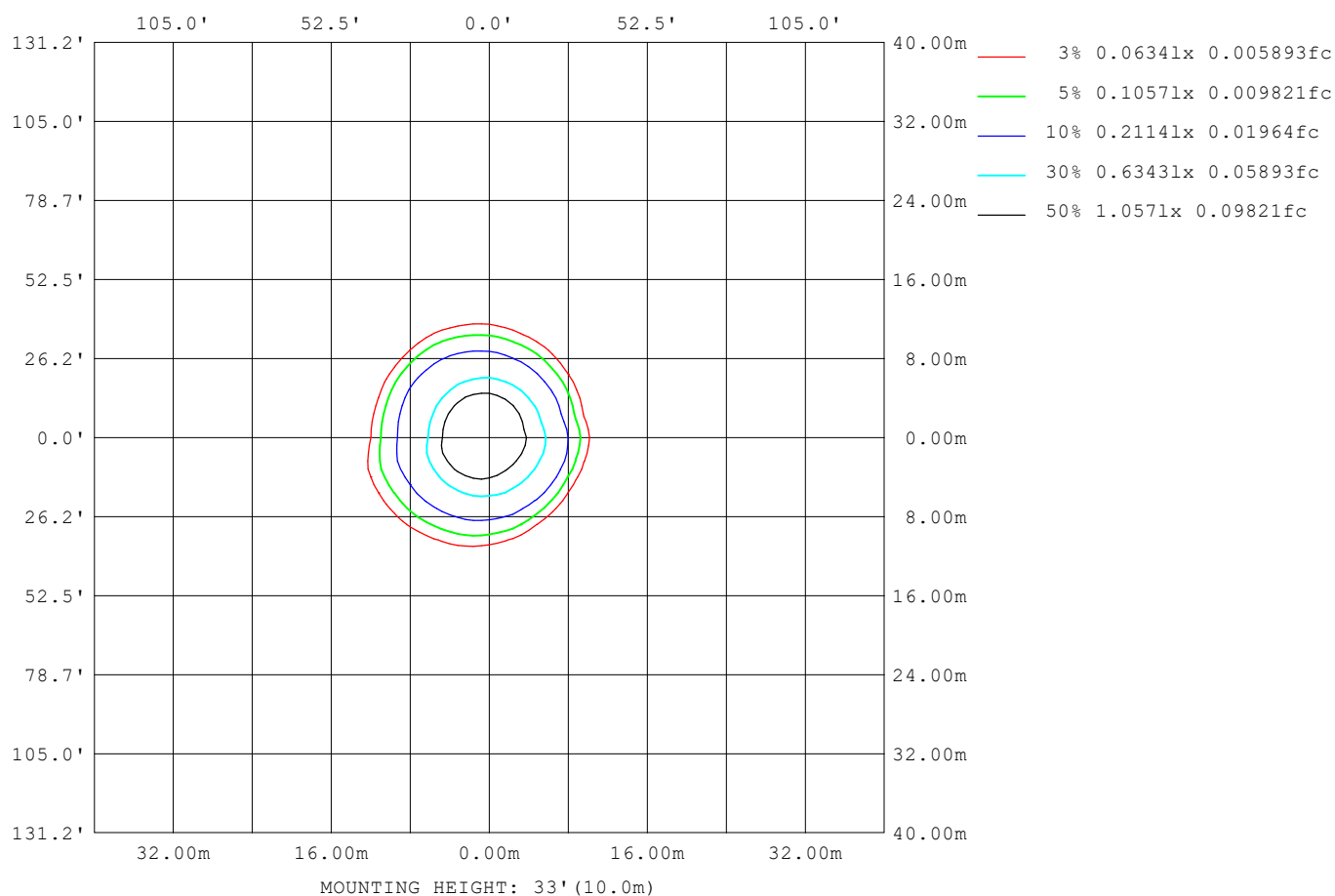
Note: The Curves indicate the illuminated area and the average illumination when the luminaire is at different distance.

C Range: 0 - 360DEG
C Interval: 15.0DEG
Test Speed: HIGH
Temperature: 25DEG
Operators: SENPU
Test Date: 2025-06-21

γ Range: 0 - 100DEG
γ Interval: 1.0DEG
Test System: EVERFINE GO-2000B_V1 SYSTEM V2.00.444
Humidity: 61%
Test Distance: 8.000m [K=1.0000]
Remarks:

ISOLUX DIAGRAM

Test:U:24.00V I:0.099A P:2.38W PF:1.000 Freq:0Hz Lamp Flux:211.809x1 lm		
NAME: 62411-6500K	TYPE:	WEIGHT:
SPEC.:	DIM.:	SERIAL No.: 2025062304
MFR.:	SUR.:	Shielding Angle:



C Range: 0 - 360DEG
C Interval: 15.0DEG
Test Speed: HIGH
Temperature:25DEG
Operators:SENPU
Test Date:2025-06-21

γ Range: 0 - 100DEG
 γ Interval: 1.0DEG
 γ Test System:EVERFINE GO-2000B_V1 SYSTEM V2.00.444
Humidity:61%
Test Distance:8.000m [K=1.0000]
Remarks:

LED Avg.L Report

Test:U:24.00V I:0.099A P:2.38W PF:1.000 Freq:0Hz Lamp Flux:211.809x1 lm		
NAME: 62411-6500K	TYPE:	WEIGHT:
SPEC.:	DIM.:	SERIAL No.: 2025062304
MFR.:	SUR.:	Shielding Angle:

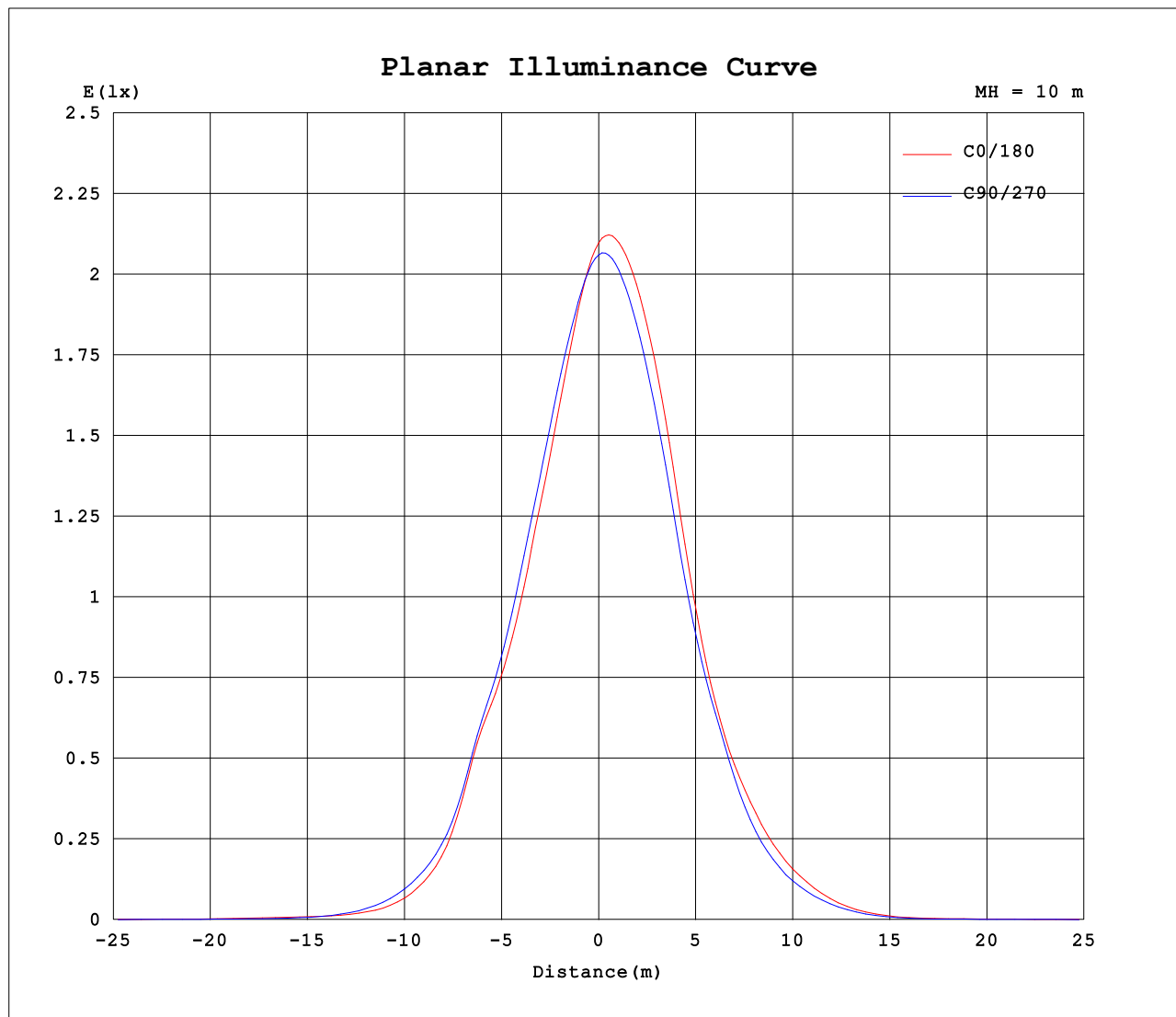
AvgL	cd/m2
L_0~180 (65) av	3426
L_0~180 (75) av	6052
L_0~180 (85) av	12899
L_90~270 (65) av	2296
L_90~270 (75) av	2429
L_90~270 (85) av	5579
L_45 (65) av	2374
L_45 (75) av	2442
L_45 (85) av	5315

Standard: GB/T 29293-2012

C Range: 0 - 360DEG
C Interval: 15.0DEG
Test Speed: HIGH
Temperature:25DEG
Operators:SENPU
Test Date:2025-06-21

γ Range: 0 - 100DEG
γ Interval: 1.0DEG
Test System:EVERFINE GO-2000B_V1 SYSTEM V2.00.444
Humidity:61%
Test Distance:8.000m [K=1.0000]
Remarks:

Planar Illuminance Curve



C Range: 0 - 360DEG
C Interval: 15.0DEG
Test Speed: HIGH
Temperature: 25DEG
Operators: SENPU
Test Date: 2025-06-21

γ Range: 0 - 100DEG
 γ Interval: 1.0DEG
Test System: EVERFINE GO-2000B_V1 SYSTEM V2.00.444
Humidity: 61%
Test Distance: 8.000m [K=1.0000]
Remarks:

LUMINOUS DISTRIBUTION INTENSITY DATA

Test:U:24.00V I:0.099A P:2.38W PF:1.000 Freq:0Hz Lamp Flux:211.809x1 lm		
NAME: 62411-6500K	TYPE:	WEIGHT:
SPEC.:	DIM.:	SERIAL No.: 2025062304
MFR.:	SUR.:	Shielding Angle:

Table--1

UNIT: cd

C (DEG) γ (DEG)	0	15	30	45	60	75	90	105	120	135	150	165	180	195	210	225	240	255	270
0	210	210	209	208	207	207	206	206	206	205	205	205	210	210	209	208	207	207	206
5	196	195	193	193	192	195	197	201	203	207	209	211	213	215	215	214	212	209	206
10	175	174	171	172	172	178	182	189	194	200	205	209	210	212	213	212	208	203	198
15	153	152	148	149	150	157	164	173	180	188	194	201	199	201	203	202	198	190	184
20	131	130	127	127	128	135	143	153	161	171	177	185	178	179	182	180	177	168	161
25	111	109	106	107	109	115	121	130	136	146	151	158	146	145	148	147	145	137	132
30	97.1	95.8	93.7	93.9	94.6	98.6	102	108	112	119	122	127	113	112	114	114	114	109	106
35	68.9	71.2	66.8	67.5	65.6	70.5	73.2	81.8	87.1	94.7	96.9	99.4	87.5	85.8	87.2	88.0	88.6	84.7	80.2
40	36.7	35.3	31.9	33.3	35.1	41.1	45.0	51.1	56.0	64.4	69.5	75.1	65.6	66.7	68.2	67.6	65.5	59.0	53.5
45	19.0	17.0	15.4	16.1	17.8	22.8	27.0	32.5	36.4	41.8	46.1	51.1	44.6	46.0	48.2	46.2	43.8	38.4	34.1
50	9.39	9.04	8.51	8.52	8.56	10.5	13.5	17.8	21.7	26.4	29.6	32.8	24.9	23.4	24.6	24.1	24.2	21.2	18.8
55	5.68	5.05	4.74	4.55	4.39	4.85	5.52	7.55	9.92	13.1	15.1	16.2	9.41	8.20	8.97	8.42	8.90	7.53	7.09
60	4.70	3.31	3.00	2.58	2.57	2.63	2.81	3.06	3.47	4.34	4.98	5.13	3.01	2.95	2.76	2.47	2.32	2.22	2.06
65	3.04	2.67	2.30	1.79	1.86	1.84	2.01	2.05	2.19	2.23	2.56	2.78	2.47	2.46	2.19	2.02	1.82	1.81	1.67
70	3.36	3.19	1.60	1.32	1.40	1.38	1.53	1.58	1.72	1.78	1.86	2.34	2.09	2.13	1.78	1.73	1.52	1.55	1.39
75	4.15	3.99	1.08	0.99	1.06	1.05	1.16	1.21	1.36	1.32	1.38	2.02	1.80	1.84	1.43	1.47	1.37	1.37	1.23
80	3.53	1.32	0.85	0.77	0.82	0.79	0.91	0.94	1.09	1.03	1.06	1.15	1.63	1.24	1.21	1.32	1.22	1.26	1.12
85	2.80	1.20	0.73	0.65	0.66	0.64	0.74	0.78	0.90	0.83	0.84	0.80	1.47	1.05	1.10	1.25	1.17	1.25	1.11
90	2.26	2.44	0.32	0.21	0.15	0.26	0.43	0.64	0.78	0.68	0.63	1.36	0.76	0.83	0.07	0.06	0.02	0.01	0.01
95	1.34	1.18	0.28	0.23	0.13	0.10	0.10	0.10	0.10	0.11	0.15	0.82	0.77	0.79	0.07	0.04	0.02	0.00	0.00
100	2.20	1.22	0.28	0.23	0.13	0.10	0.10	0.10	0.10	0.11	0.15	0.67	0.58	0.64	0.07	0.04	0.02	0.01	0.01
105	0.00	0.00	0.00	0.00	0.00	0.00	0.00	0.00	0.00	0.00	0.00	0.00	0.00	0.00	0.00	0.00	0.00	0.00	0.00
110	0.00	0.00	0.00	0.00	0.00	0.00	0.00	0.00	0.00	0.00	0.00	0.00	0.00	0.00	0.00	0.00	0.00	0.00	0.00
115	0.00	0.00	0.00	0.00	0.00	0.00	0.00	0.00	0.00	0.00	0.00	0.00	0.00	0.00	0.00	0.00	0.00	0.00	0.00
120	0.00	0.00	0.00	0.00	0.00	0.00	0.00	0.00	0.00	0.00	0.00	0.00	0.00	0.00	0.00	0.00	0.00	0.00	0.00
125	0.00	0.00	0.00	0.00	0.00	0.00	0.00	0.00	0.00	0.00	0.00	0.00	0.00	0.00	0.00	0.00	0.00	0.00	0.00
130	0.00	0.00	0.00	0.00	0.00	0.00	0.00	0.00	0.00	0.00	0.00	0.00	0.00	0.00	0.00	0.00	0.00	0.00	0.00
135	0.00	0.00	0.00	0.00	0.00	0.00	0.00	0.00	0.00	0.00	0.00	0.00	0.00	0.00	0.00	0.00	0.00	0.00	0.00
140	0.00	0.00	0.00	0.00	0.00	0.00	0.00	0.00	0.00	0.00	0.00	0.00	0.00	0.00	0.00	0.00	0.00	0.00	0.00
145	0.00	0.00	0.00	0.00	0.00	0.00	0.00	0.00	0.00	0.00	0.00	0.00	0.00	0.00	0.00	0.00	0.00	0.00	0.00
150	0.00	0.00	0.00	0.00	0.00	0.00	0.00	0.00	0.00	0.00	0.00	0.00	0.00	0.00	0.00	0.00	0.00	0.00	0.00
155	0.00	0.00	0.00	0.00	0.00	0.00	0.00	0.00	0.00	0.00	0.00	0.00	0.00	0.00	0.00	0.00	0.00	0.00	0.00
160	0.00	0.00	0.00	0.00	0.00	0.00	0.00	0.00	0.00	0.00	0.00	0.00	0.00	0.00	0.00	0.00	0.00	0.00	0.00
165	0.00	0.00	0.00	0.00	0.00	0.00	0.00	0.00	0.00	0.00	0.00	0.00	0.00	0.00	0.00	0.00	0.00	0.00	0.00
170	0.00	0.00	0.00	0.00	0.00	0.00	0.00	0.00	0.00	0.00	0.00	0.00	0.00	0.00	0.00	0.00	0.00	0.00	0.00
175	0.00	0.00	0.00	0.00	0.00	0.00	0.00	0.00	0.00	0.00	0.00	0.00	0.00	0.00	0.00	0.00	0.00	0.00	0.00
180	0.00	0.00	0.00	0.00	0.00	0.00	0.00	0.00	0.00	0.00	0.00	0.00	0.00	0.00	0.00	0.00	0.00	0.00	0.00

C Range: 0 - 360DEG
C Interval: 15.0DEG
Test Speed: HIGH
Temperature:25DEG
Operators:SENPU
Test Date:2025-06-21

γ Range: 0 - 100DEG
γ Interval: 1.0DEG
Test System:EVERFINE GO-2000B_V1 SYSTEM V2.00.444
Humidity:61%
Test Distance:8.000m [K=1.0000]
Remarks:

LUMINOUS DISTRIBUTION INTENSITY DATA

Test:U:24.00V I:0.099A P:2.38W PF:1.000 Freq:0Hz Lamp Flux:211.809x1 lm		
NAME: 62411-6500K	TYPE:	WEIGHT:
SPEC.:	DIM.:	SERIAL No.: 2025062304
MFR.:	SUR.:	Shielding Angle:

Table--2

UNIT: cd

γ (DEG)	C (DEG)																		
	285	300	315	330	345														
0	206	206	205	205	205														
5	201	198	194	192	189														
10	191	186	179	174	168														
15	175	169	161	156	148														
20	152	146	138	132	125														
25	125	121	115	111	107														
30	101	98.4	92.8	91.1	88.1														
35	71.5	66.0	59.6	56.8	52.8														
40	46.7	42.8	38.2	35.2	31.0														
45	29.0	26.1	21.7	19.1	15.6														
50	15.0	12.7	9.61	8.74	7.43														
55	5.42	4.58	3.52	5.38	5.44														
60	2.08	1.96	2.05	2.79	4.05														
65	1.66	1.52	1.58	1.76	3.16														
70	1.39	1.20	1.26	1.22	4.02														
75	1.19	1.00	1.01	0.93	3.27														
80	1.08	0.85	0.86	0.74	0.84														
85	1.05	0.80	0.79	0.67	1.69														
90	0.02	0.01	0.06	0.08	1.18														
95	0.01	0.01	0.04	0.08	1.90														
100	0.01	0.01	0.04	0.08	2.38														
105	0.00	0.00	0.00	0.00	0.00														
110	0.00	0.00	0.00	0.00	0.00														
115	0.00	0.00	0.00	0.00	0.00														
120	0.00	0.00	0.00	0.00	0.00														
125	0.00	0.00	0.00	0.00	0.00														
130	0.00	0.00	0.00	0.00	0.00														
135	0.00	0.00	0.00	0.00	0.00														
140	0.00	0.00	0.00	0.00	0.00														
145	0.00	0.00	0.00	0.00	0.00														
150	0.00	0.00	0.00	0.00	0.00														
155	0.00	0.00	0.00	0.00	0.00														
160	0.00	0.00	0.00	0.00	0.00														
165	0.00	0.00	0.00	0.00	0.00														
170	0.00	0.00	0.00	0.00	0.00														
175	0.00	0.00	0.00	0.00	0.00														
180	0.00	0.00	0.00	0.00	0.00														

C Range: 0 - 360DEG
 C Interval: 15.0DEG
 Test Speed: HIGH
 Temperature:25DEG
 Operators:SENPU
 Test Date:2025-06-21

γ Range: 0 - 100DEG
 γ Interval: 1.0DEG
 Test System:EVERFINE GO-2000B_V1 SYSTEM V2.00.444
 Humidity:61%
 Test Distance:8.000m [K=1.0000]
 Remarks: